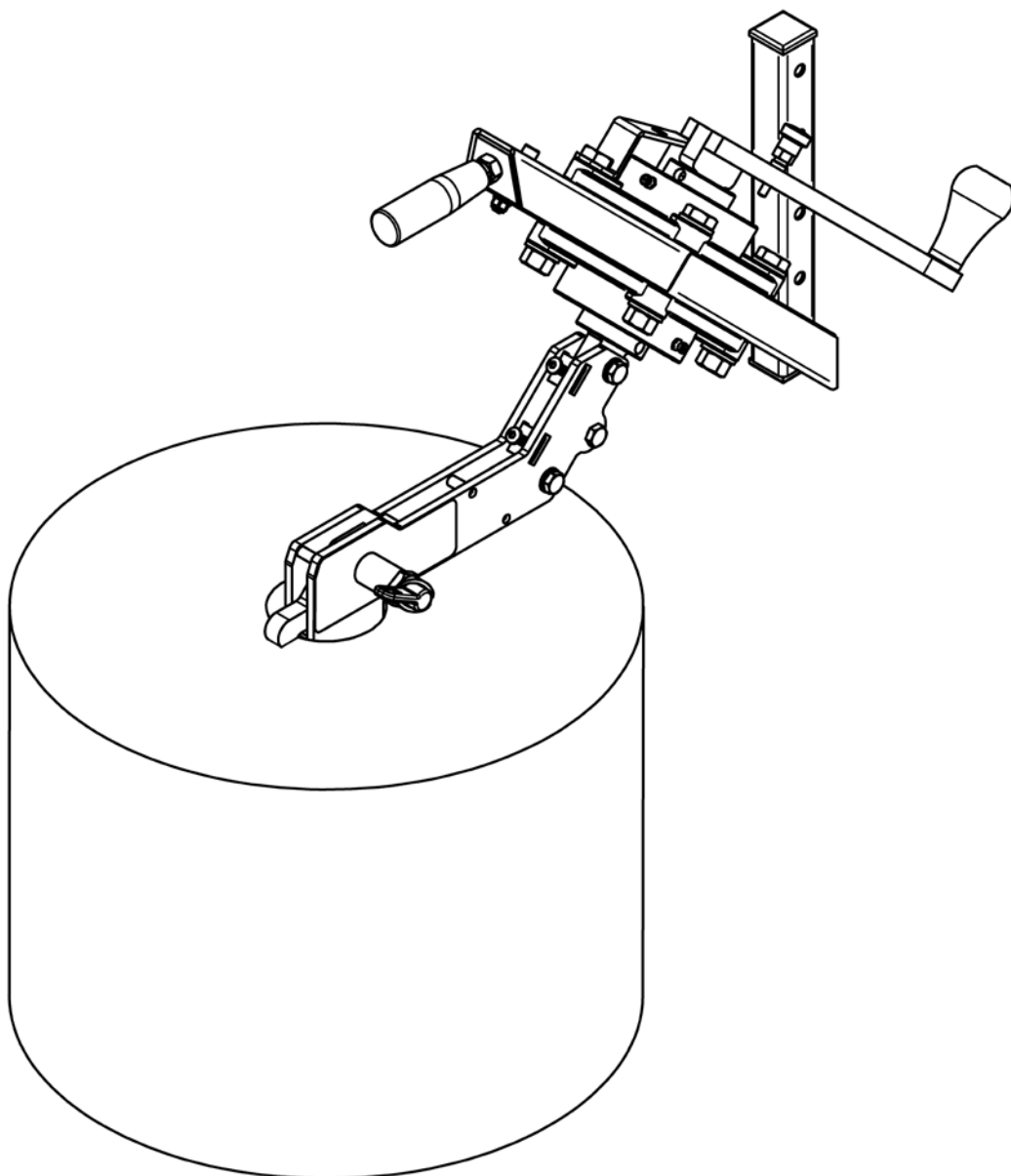




Expand&Turn Light 17940

User's manual

Original Instructions



It is important that you read and understand this manual before the attachment is used.
Questions? – Contact your supplier or the manufacturer.

Pronomic AB

Street address:	Postal address:
Domherrevägen 15	Box 5504
192 55 Sollentuna	192 05 Sollentuna

Phone: 08-544 706 60

Fax: 08-544 706 70

E-mail: info@pronomic.se

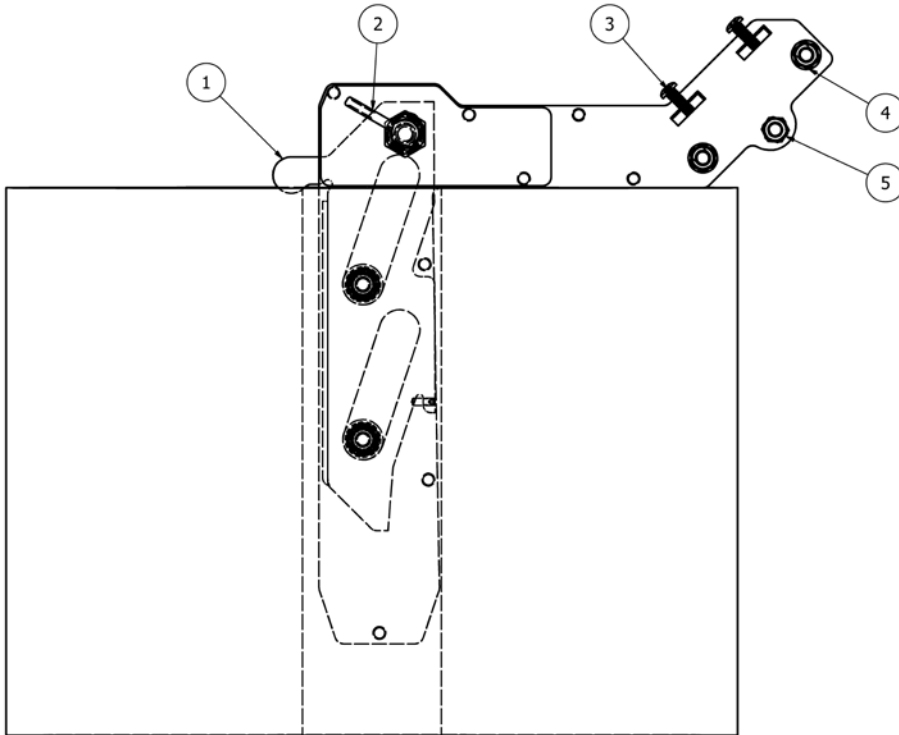
www.pronomic.se

Content

1	Description of the attachment Expand&Turn Light	1
1.1	Warranty.....	1
2	Assembly.....	2
2.1	Disassembly and scrapping	2
3	Use.....	2
3.1	Loading	2
3.1.1	Load and rotate standing rolls.....	2
3.1.2	Loading rolls laying down or from a prong	3
3.2	Unloading rolls.....	3
3.2.1	Unload rolls standing.....	3
3.2.2	Unloading rolls laying down onto a prong	3
3.3	Adjusting the angle of the expander.....	4
4	Safety.....	4
4.1	Storage and transport	4
4.2	Moving.....	4
4.3	Loading and unloading	4
5	Maintenance	4
5.1	Every day	4
5.2	Every day, or when needed.....	4
5.3	Troubleshooting	5
5.4	Spare parts.....	5
6	Technical data	6
7	Approved attachments for Lift&Drive trolleys.....	7
	EC DECLARATION OF CONFORMITY FOR PARTIAL MACHINERY	8

1 Description of the attachment Expand&Turn Light

Expand&Turn Light is designed to lift rolls by the core and then turn them, for example to feed into machines. The roll is gripped in the core by the expander block which uses the rolls own-weight to grip. The expander can be set in to modes by using the setting pin, active mode for lifting and turning, inactive mode for unloading. The expander can handle rolls of different kind but the maximum load is limited by the length and weight of the roll.



1. Expander block
2. Setting pin
3. Set screws
4. Assembly bolts
5. Balance bolt

Overview of the expander and key parts

The maximum load of the attachment is 40kg but this is limited by the dimension of the roll. See chapter 6 “technical data” for more information.

The attachments are only intended to be used with Pronomic AB’s Lift&Drive lift trolleys.

They are only to be used indoors in well lit environments on level floors.

Additional technical documentation can be ordered from Pronomic AB.

1.1 Warranty

The warranty applies for one (1) year from the date of delivery for material and manufacturing errors. For the warranty to apply, maintenance should be carried out according to instructions. This warranty does not cover normal maintenance, settings or regular adjustments. Neither will labour costs from such measures be covered by the warranty. Damages caused by abuse or improper use of the equipment will also void the warranty.

2 Assembly

When mounting the attachment, protective shoes should be worn, as the parts can cause injury if dropped.

2.1 Disassembly and scrapping

When scrapping the attachment should be sent to a recycling center or Pronomic to guarantee recycling and safe handling of all the consisting parts of the tool.

3 Use

The attachment is for roll-handling only.

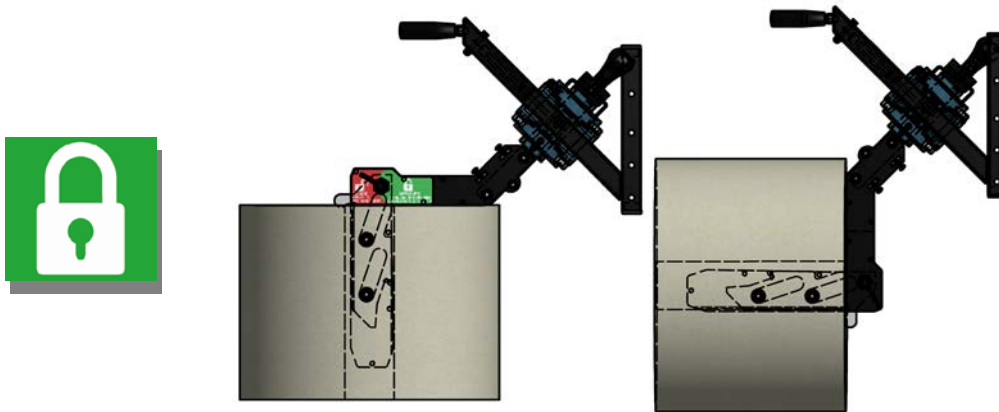
3.1 Loading

In order to load a roll onto the expander the setting pin needs to be set to green (active mode).

3.1.1 Load and rotate standing rolls

Turn the setting pin to green (active mode).

(Active mode can also be set after the expander core is inside the roll)



The expander block will now slide out from the expander. Position the tool above the roll and descend into the core. The Lift&Drive slipping clutch will prevent the tool from being lowered too far. When the expander is being lowered the expander block will slide back but instantly lock the roll if moving upwards. When the expander is fully descended into the core the roll can be lifted and turned. Use the two handles when rotating. If the roll is turned from standing to laying a safety pin will activate when reaching the end position. The safety pin prevents the expander from turning unintentionally during transport. Pull the safety pin to turn the roll back to standing.



3.1.2 Loading rolls laying down or from a prong

Turn the setting pin to green (active mode).

(Active mode can also be set after the expander core is inside the roll)



Position the expander to the prong or the core of the roll and activate the brakes on the trolley. Slide the roll onto the expander completely. The expander block will slide back but instantly lock the roll when rotated.

Notice! – Do not place any hands or feet under a rotating load. Always rotate in the direction away from you.

3.2 Unloading rolls

To unload a roll the setting pin needs to be set to red (inactive mode). This can be done if the roll is pushed in all the way on the expander pressing the expander block back or if the expander block is pulled back by hand.

3.2.1 Unload rolls standing

(In active, green mode)

Lower the roll on a surface. Continue to lower the expander until the expander block is in its end position. The Lift&Drive slipping clutch will prevent the tool from being lowered to far. Turn the setting pin to red (inactive mode), this will prevent the expander block from sliding out.



In cases where the roll is too short the expander block needs to be pulled back by hand. Pull the block all the way back and then turn the setting pin to red (inactive mode). The expander can now be removed using the controls for the trolley.

3.2.2 Unloading rolls laying down onto a prong

(In active, green mode)

Position the expander to the prong or the roll to the surface, activate the brakes on the trolley. Make sure that the roll is pushing the expander block all the way back. Turn the setting pin to red (inactive mode), this will prevent the expander block from sliding out. Slide the roll of the expander by hand onto the prong or by moving the trolley when unloading on a surface.

3.3 Adjusting the angle of the expander

The expander can be adjusted to compensate for the weight of the roll and/or the circumstances around loading/unloading. This is done by loosening the assembly bolts(see drawing, Chapter 1), do not remove the bolts. Adjust the angle using the setscrews. Tighten the bolts/nuts.

4 Safety

The operator should use personal safety equipment (e.g. protective shoes) that handling the specific goods requires.

Stated maximum load must not be exceeded.

Be aware of the risk of crushing present between the attachment and the trolleys legs or the floor when raising or lowering the load. Avoid putting hands or other parts of your body under the load at all times.

4.1 Storage and transport

If the attachment is attached to a trolley when transported, the trolley should be carefully tied down to minimize the tipping risk.

If the attachment is transported separately it should be carefully packed to protect the expander.

4.2 Moving

The attachment should always be lowered to the lowest possible position before moving the trolley to have the safest and most stable handling possible. Be cautious when passing thresholds, cables and other objects on the floor.

4.3 Loading and unloading

The operator is responsible for the correct use of the attachment. Do not place any hands or feet under a rotating load. Always rotate in the direction away from you.

5 Maintenance

5.1 Every day

Wipe the attachment clean if it is dirty. Do not use water or pressure washers.

Check the expander block and make sure it slides out of the core when activated.

5.2 Every day, or when needed

Check the screws holding holding the expander on the trolley

Check locking nuts on the expander itself. The two nuts securing the expander block should not be tightened hard but make sure the bolt go through the nuts.

Look for other damage or wear to the components.

Sign/decals	Description	Placement
Unit designation	Decal with serial number	One decal on the top of the tooling
Instruction decal	Decal instructing the operator	One decal on top of the handle and one on the side of the expander core
Max. load decal	Max load of the attachment	One decal on the top of the tooling

5.3 Troubleshooting

If the actual gripping mechanism fails make sure no dirt/object interferes with the movement of the expander block. Make sure the spring moving the expander block is in place and works properly.

Other troubles – see the manual for your Lift&Drive trolley.

If the attachment is faulty or damaged please contact your dealer or Pronomic AB.

5.4 Spare parts

List of relevant spare parts

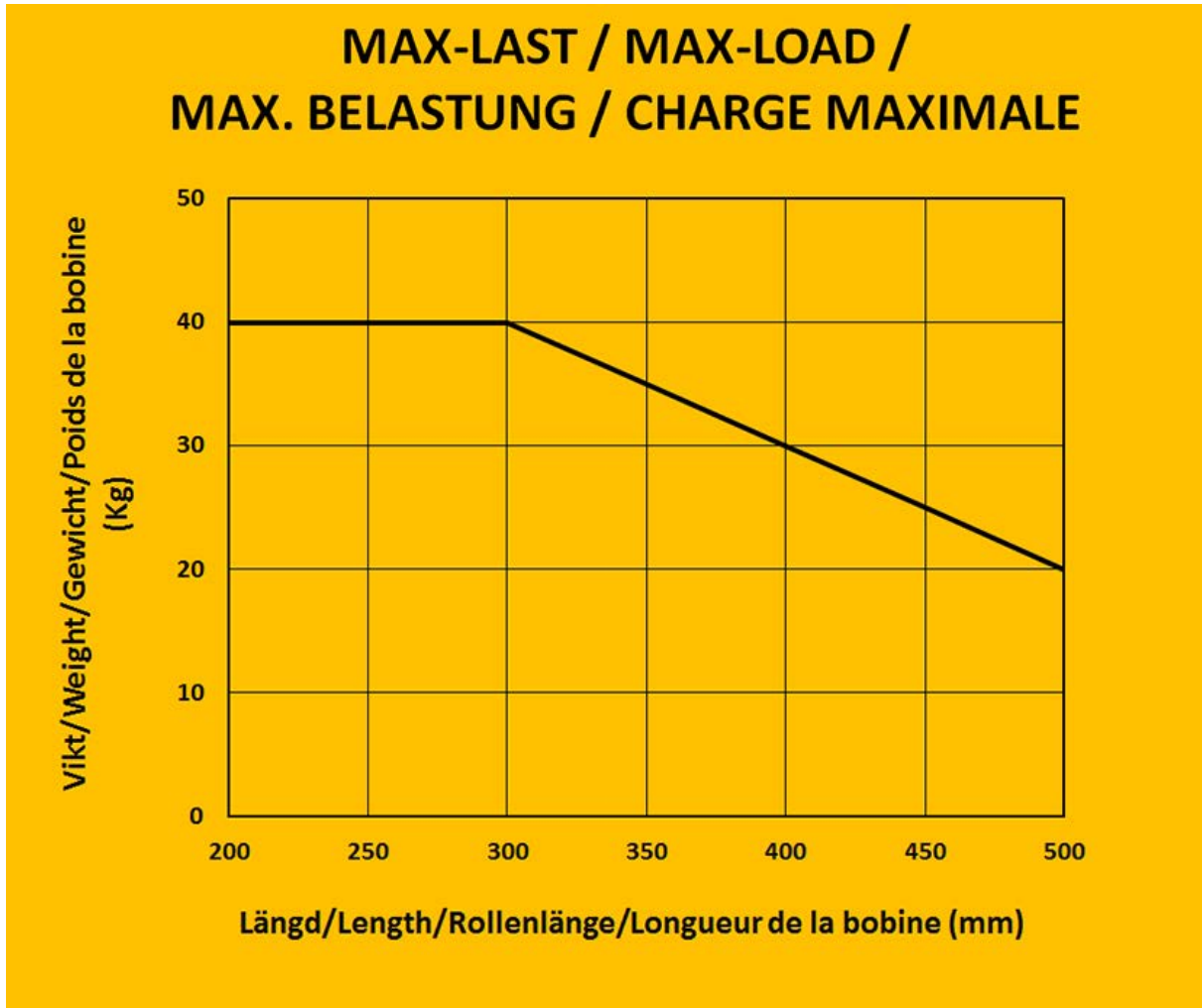
17940-05 Expander block (with rubber)

17940-10 Spring for expander block

For other spare parts please contact your supplier or Pronomic AB.

6 Technical data

Max-load is determined by the roll-measures and weight. Maximum weight of a roll is 40kg. The diagram below explains the relationship between the weight and length of the roll.



For additional technical data see the manual for your Lift&Drive trolley.

Noise level	Noise level not exceeding 70 dB(A)
Vibrations	Vibrations level not exceeding 2,5 m/s ²

Questions? - Please contact your supplier or Pronomic AB

7 Approved attachments for Lift&Drive trolleys

17940 Expand&Turn Light

	70E	70IE	90E	90IE	90JE	90P	130P	175P	225P
15012	x	x	x	x	x	x	x		
15013	x	x	x	x	x	x	x	x	x
15014	x	x	x	x	x	x	x	x	x
15015	x	x	x	x	x	x	x	x	x
15016	x	x	x	x	x	x	x	x	x
15017	x	x	x	x	x	x	x	x	x
15018		x		x	x				
15019	x	x	x	x	x	x	x		
15024	x		x						
15080	x		x						
15322		x		x	x				
15324		x		x	x				
15338		x		x	x				
15339		x		x	x				
16020		x		x	x				
16038		x		x	x				
16338		x		x	x				
17182A						x	x		
17229	x	x	x	x	x	x	x		
17230	x	x	x	x	x	x	x		
17230A	x	x	x	x	x	x	x		
17233	x	x	x	x	x	x	x		
17241	x	x	x	x	x	x	x		
17710	x	x	x	x	x	x	x		
17720	x	x	x	x	x	x	x		
17730	x	x	x	x	x	x	x		
17740	x	x	x	x	x	x	x		
17940				x	x	x	x		
17950						x	x		
17971						x	x		
17972						x	x		

8 EC DECLARATION OF CONFORMITY FOR PARTIAL MACHINERY

ORIGINAL

(in accordance with 2006/42/EC, Annex II 1B)

Manufacturer	Pronomic AB Box 5504 192 05 Sollentuna
Model designation	Expand&Turn Light <input type="checkbox"/> 17940
Serial number	

Authorized to compile the technical file	Samuel Pierre, Pronomic AB, BOX 5504, 192 05 Sollentuna
--	---

Applied directives:

2006/42/EC	Machinery Directive
2014/30/EU	EMC Directive

Applied standards:

SS-EN ISO 12100:2010	Safety of machinery – General principles for design. Risk assessment and risk reduction
SS-EN 349+A1:2008	Safety of machinery - Minimum gaps to avoid crushing of parts of the human body

We hereby declare that the above-referenced machine, built and equipped with attachments included in this manual, is in conformity with stated directives and standards.

Sollentuna, 2015-01-20



.....

Joakim Stannow, PRONOMIC AB

Distributed by: