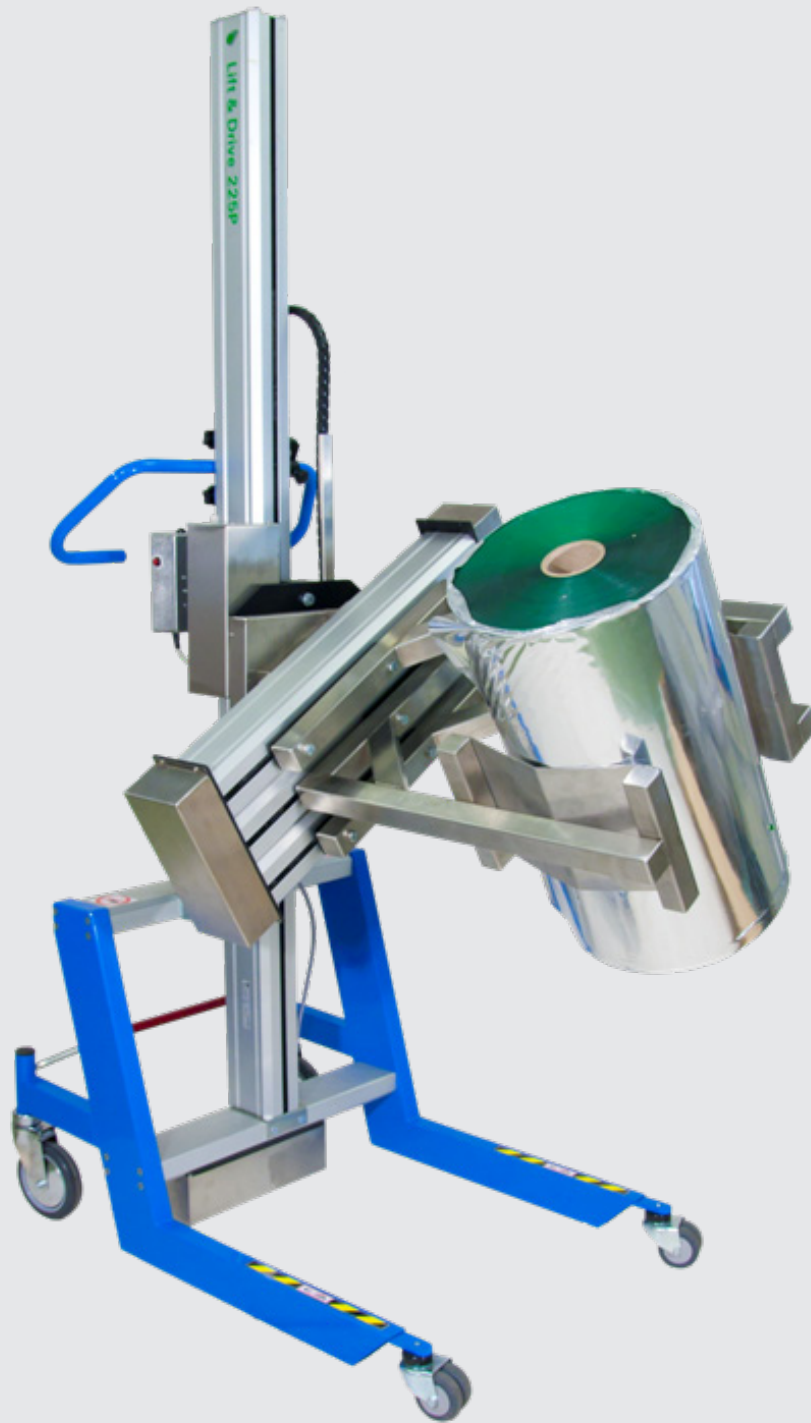


Lift&Drive



Lift&Drive

175-225P

 PRONOMIC

# Lift&Drive 175-225P

Lifters based on modular design,  
make it suit your requirements

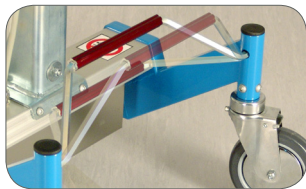
Our selfmanufactured lift trolley 175 and 225P handles loads up to 225 kg.

Your requirements determine the appearance of the final lifter. The trolley are flexible and equipped with a directional lock on the rear wheels, this make it maneuverable and quick and easy to turn sideways.

The trolley are very simple to use and easy to handle, and it require only very little maintenance.

The column are equipped with a screw drive and are available in different heights.

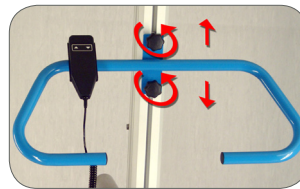
To ensure maximal safety the trolley possess a built-in release function, which serves as protection from crushing injuries and prevents the trolley from tipping over.



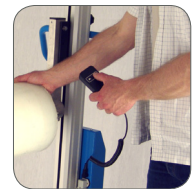
Central brake and directional lock on the rear wheels



Screw drive with coaster function to prevent crushing injuries and the trolley tipping over



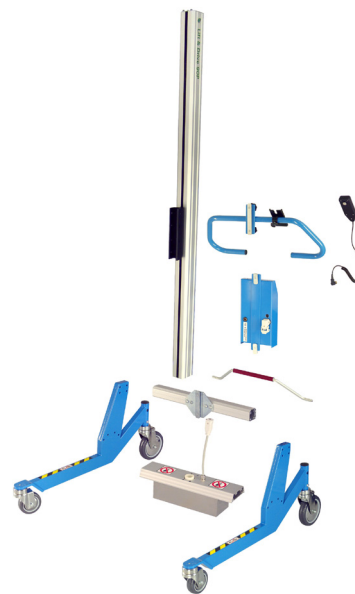
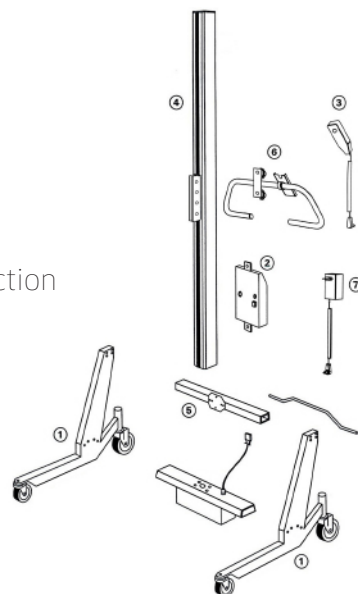
Height-adjustable handlebar



Detachable manual control box

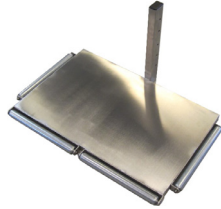
## Module-based design - your requirements a g environment determine the final tool

- 1 Pair of legs
- 2 Electronic unit
- 3 Control box
- 4 Column
- 5 Intermediate section
- 6 Handlebar
- 7 Charger



# Accessories - standard or customized

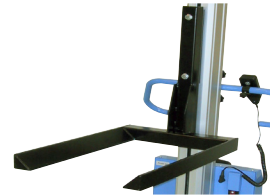
Select an accessory you require from our broad range of standard tools: prong for roll handling, roll platform, lifting forks, as well as our Squeeze&Turn modules; weighing scales and counting scales, etc. We also manufacture customized tools in accordance to your specifications.



Platform with edge rolls



Prong for roll handling



Fork



Roll platform, with front-feed



Roll platform, with side-feed



Scales



Squeeze&Turn

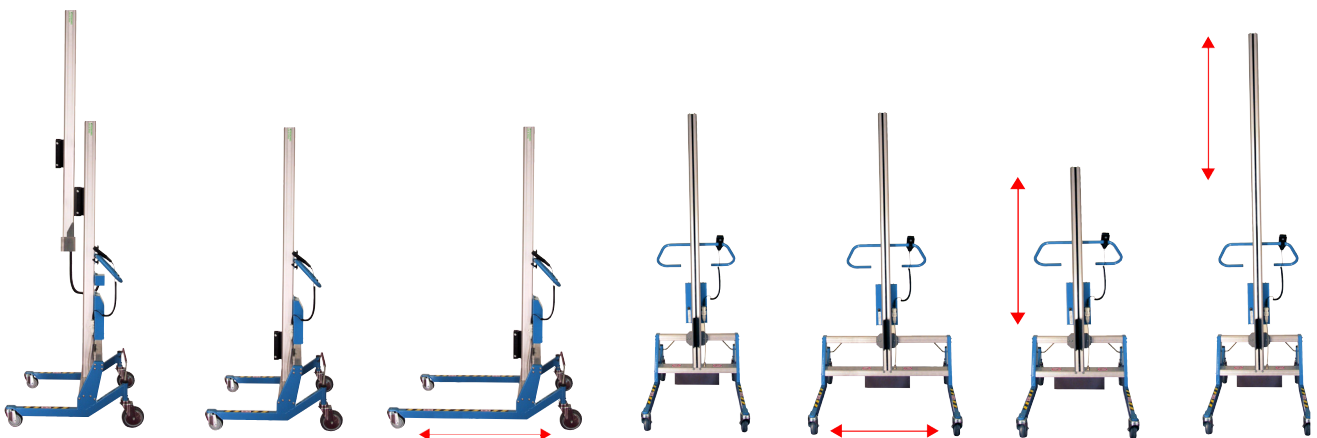


Expand&Turn - pneumatic expander, turning operated electrically



Expand&Turn - pneumatic expander, turning operated manually

# Flexibility - hoose mast height, and width & length of legs



# Technical Specifications

## Technical Specifications for Lift&Drive, 175-225P

Column	Overall height, standard	Overall height, low built	Length of stroke 175P	Length of stroke 225P
standard	2000	1950	1375	1275
+500	2500	2450	1875	1775
+1000	3000	2950	2375	2275
Minimum lifting height (with std. platform)			106 mm	
Max lifting height (with a +1000 column)			2481 mm	
Stroke length			1275, 1375, 1775, 1875, 2275, 2375 mm	
Total width (with std.legs)			576 mm to 1300 mm	
Length (without platform) standard, low built			984, 959 mm	
Width, standard			576 to 1300 mm	
Laoadplatform (LxB), standard			600 x 550	
Wheel diameter (front/rear) standard, low-built			100/150, 60/100 mm	
Maximum load 175P, 225P			175 kg, 225 kg	
Dead weight (with std. platform)			ca 78 kg	
Battery voltage			24 V	
Battery capacity			17 Ah	
Charging voltage			230VAC/50Hz or 115VAC/60Hz	
Lifting speed with a full load - 175P			4 m/minut	
Lifting speed with a full load - 225P			3,2 m/minut	
Material			Chassi in powder-coated steel and stainless steel	

For further info  
please contact your  
sales representative

PRONOMIC AB

E-post: [info@pronomic.se](mailto:info@pronomic.se)  
Hemsida: [www.pronomic.se](http://www.pronomic.se)



 **PRONOMIC**